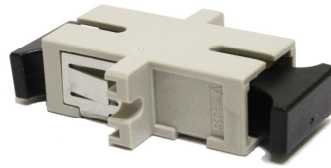


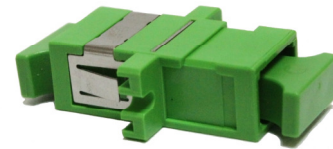
## Optical Adaptors



SC single mode



SC multi mode



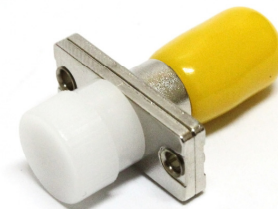
SC APC



LC adaptor



FC adaptor



FC/ST adaptor



ST adaptor



SC/ST adaptor

### Feature

1. Low insertion loss and back reflection loss
2. High precision alignment sleeve
3. IEC and TIA/EIA compliance
4. Compact design
5. Choice of housing material and sleeve material

### Application

1. CATV & LAN (Local Area Network)
2. Telecommunication & Data processing networks
3. Test equipment
4. Metro system

### Specification

Item	Optical Fiber Adapters	
	Ceramic	Bronze
Sleeve Material	Ceramic	Bronze
Typical Insertion Loss (dB)	0.1	0.3
Max. Insertion Loss (dB)	0.3	0.5
Operating Temperature (°C)	-40 to +75	
Storage Temperature (°C)	-50 to +85	
Housing Color	Beige/Blue/Green	
Housing Material	Plastic or Metal	
Type	SC, FC, ST, LC, E2000, MU, MTRJ, D4 DIN, SMA, MPO Various hybrid type	